



**Mahatma Phule Krishi Vidyapeeth, Rahuri**  
**Information about Crop wise Improved / Hybrid Varieties Developed by University**

**Improved / Hybrid Varieties of Wheat**

**N-5439 [*Triticum aestivum*]**



	<b>Release year</b>	1972
	<b>Name of Institute / University</b>	Agricultural Research Station, Niphad
	<b>Soil type</b>	Medium Soil
	<b>Climate</b>	Cool and dry
	<b>Sowing Time / Planting period</b>	Second Fortnight of October
<b>Seed Rate (Per acre)</b>	30 kg/Acre	
<b>Crop duration</b>	Early Maturity (110 days)	
<b>Productivity</b>	5 - 6 qt./Acre under rainfed condition	
<b>Characters / features</b>	1) Recommended for rainfed conditions of Peninsular Zone 2) Drought and heat tolerant 3) Excellent for <i>chapati</i> 4) Tolerant to aphids	
<b>Remark</b>	Suitable for Rainfed condition	

**NI-5643 [*Triticum aestivum*]**



	<b>Release year</b>	1973
	<b>Name of Institute / University</b>	Agricultural Research Station, Niphad
	<b>Soil type</b>	Medium to Heavy Soil
	<b>Climate</b>	Cool and dry
	<b>Sowing Time / Planting period</b>	1 <sup>st</sup> Fortnight of November
<b>Seed Rate (Per acre)</b>	40 kg/Acre	
<b>Crop duration</b>	Medium Maturity (120-125 days)	
<b>Productivity</b>	10 - 12 qt./acre	
<b>Characters / features</b>	1) Recommended for timely sown irrigated conditions of Maharashtra State 2) Better <i>chapati</i> quality 3) Tolerant to aphids	
<b>Remark</b>	High yielding variety under timely sown irrigated condition	



## Mahatma Phule Krishi Vidyapeeth, Rahuri

### Information about Crop wise Improved / Hybrid Varieties Developed by University

#### N-5749 [*Triticum durum*]



<b>Release year</b>	1975
<b>Name of Institute / University</b>	Agricultural Research Station, Niphad
<b>Soil type</b>	Medium Soil
<b>Climate</b>	Cool and dry
<b>Sowing Time / Planting period</b>	Second Fortnight of October
<b>Seed Rate (Per acre)</b>	30 kg/Acre
<b>Crop duration</b>	Early Maturity (110 days)
<b>Productivity</b>	4 - 5 qt./acre under rainfed conditions
<b>Characters / features</b>	1) Recommended for rainfed conditions of Maharashtra State 2) Non-waxy, tall type 3) Tolerant to aphids
<b>Remark</b>	High yielding variety under rainfed condition

#### Vinata [N-8223] [*Triticum aestivum*]



<b>Release year</b>	1985
<b>Name of Institute / University</b>	Agricultural Research Station, Niphad
<b>Soil type</b>	Medium Soil
<b>Climate</b>	Cool and dry
<b>Sowing Time / Planting period</b>	Second Fortnight of October
<b>Seed Rate (Per acre)</b>	30 kg/Acre
<b>Crop duration</b>	Early Maturity (110 days)
<b>Productivity</b>	5 - 6 qt./acre
<b>Characters / features</b>	1) Recommended for rainfed conditions of Maharashtra State 2) Erect type with broad leaves 3) Better <i>chapati</i> quality 4) Tolerant to aphids 5) Tolerant to rust
<b>Remark</b>	High yielding variety under rainfed condition



## Mahatma Phule Krishi Vidyapeeth, Rahuri

### Information about Crop wise Improved / Hybrid Varieties Developed by University

#### Niphad (NIAW-34) [*Triticum aestivum*]



	<b>Release year</b>	1995
	<b>Name of Institute / University</b>	Agricultural Research Station, Niphad
	<b>Soil type</b>	Medium Soil
	<b>Climate</b>	Cool and dry
	<b>Sowing Time / Planting period</b>	1 <sup>st</sup> Fortnight of December
<b>Seed Rate (Per acre)</b>	50 kg/Acre	
<b>Crop duration</b>	Early Maturity (105-110 days)	
<b>Productivity</b>	14 - 16 qt./acre	
<b>Characters / features</b>	1) Recommended for late sown irrigated conditions of Peninsular Zone 2) Medium size grain 3) Tolerant to aphids 4) Resistant to Black and Brown rust 5) Protein content more than 13 %	
<b>Remark</b>	Best for <i>chapati</i> quality	

#### Kadava (NI-9947) [*Triticum aestivum*]



	<b>Release year</b>	1995
	<b>Name of Institute / University</b>	Agricultural Research Station, Niphad
	<b>Soil type</b>	Medium Soil
	<b>Climate</b>	Cool and dry
	<b>Sowing Time / Planting period</b>	1st fortnight of December
<b>Seed Rate (Per acre)</b>	50 kg	
<b>Crop duration</b>	Early Maturity (90-105 days)	
<b>Productivity</b>	10-12 quintals/ acre	
<b>Characters / features</b>	1) Recommended for late sown irrigated conditions of Maharashtra State 2) Better chapati quality 3) Tolerant to aphids, Resistant to Black and Brown rust 4) Protein content 13.8 %	
<b>Remark</b>	High yielding variety under late sown condition	



## Mahatma Phule Krishi Vidyapeeth, Rahuri

### Information about Crop wise Improved / Hybrid Varieties Developed by University

#### Trambak (NIAW-301) [*Triticum aestivum*]



	<b>Release year</b>	2001
	<b>Name of Institute / University</b>	Agricultural Research Station, Niphad
	<b>Soil type</b>	Medium to heavy Soil
	<b>Climate</b>	Cool and dry
	<b>Sowing Time / Planting period</b>	1 <sup>st</sup> Fortnight of November
<b>Seed Rate (Per acre)</b>	40 kg/Acre	
<b>Crop duration</b>	Medium Maturity (110-115 days)	
<b>Productivity</b>	16 - 18 quintals/acre	
<b>Characters / features</b>	1) Recommended for irrigated timely sown conditions of Maharashtra State 2) Medium sized grains 3) Best <i>chapati</i> quality 4) Tolerant to aphids 5) Resistant to rust 6) Protein content 12 %	
<b>Remark</b>	Highly accepted by the farmers	

#### Panchavati [NIDW-15] [*Triticum durum*]



	<b>Release year</b>	2002
	<b>Name of Institute / University</b>	Agricultural Research Station, Niphad
	<b>Soil type</b>	Medium to heavy Soil
	<b>Climate</b>	Cool and dry
	<b>Sowing Time / Planting period</b>	Second Fortnight of October
<b>Seed Rate (Per acre)</b>	30 kg/Acre	
<b>Crop duration</b>	Early Maturity (105 days)	
<b>Productivity</b>	5 - 6 qt./acre	
<b>Characters / features</b>	1) Recommended for rainfed conditions of Maharashtra State 2) Bold attractive shining grains 3) Best suitable for macroni making 4) Tolerant to aphids 5) Resistant to rust	
<b>Remark</b>	Best durum variety under rainfed condition	



## Mahatma Phule Krishi Vidyapeeth, Rahuri

### Information about Crop wise Improved / Hybrid Varieties Developed by University

#### Godavari [NIDW-295] [*Triticum durum*] (Processing Purpose)



	<b>Release year</b>	2005
	<b>Name of Institute / University</b>	Agricultural Research Station, Niphad
	<b>Soil type</b>	Medium to heavy Soil
	<b>Climate</b>	Cool and dry
	<b>Sowing Time / Planting period</b>	1 <sup>st</sup> Fortnight of November
<b>Seed Rate (Per acre)</b>	40 kg/Acre	
<b>Crop duration</b>	Medium Maturity (110-115 days)	
<b>Productivity</b>	18 - 20 qt./acre	
<b>Characters / features</b>	<ol style="list-style-type: none"> <li>1) Recommended for irrigated timely sown conditions of Maharashtra State</li> <li>2) Bold attractive shiny grains</li> <li>3) Best suitable for macroni making</li> <li>4) Tolerant to aphids</li> <li>5) Resistant to rust</li> <li>6) Protein content 12 %</li> </ol>	
<b>Remark</b>	Best durum variety for process industry.	

#### Tapovan [NIAW-917] [*Triticum aestivum*]



	<b>Release year</b>	2005
	<b>Name of Institute / University</b>	Agricultural Research Station, Niphad
	<b>Soil type</b>	Medium to heavy Soil
	<b>Climate</b>	Cool and dry
	<b>Sowing Time / Planting period</b>	1 <sup>st</sup> Fortnight of November
<b>Seed Rate (Per acre)</b>	40 kg/Acre	
<b>Crop duration</b>	Medium Maturity (110-115 days)	
<b>Productivity</b>	18 - 20 quintals/acre	
<b>Characters / features</b>	<ol style="list-style-type: none"> <li>1) Recommended for irrigated timely sown conditions of Maharashtra State</li> <li>2) Medium size grains</li> <li>3) Best for <i>chapati</i> making</li> <li>4) Tolerant to aphids</li> <li>5) Resistant to rust</li> <li>6) Protein content more than 12.5 %</li> </ol>	
<b>Remark</b>	Best high yielding variety under timely sown irrigated condition	



## Mahatma Phule Krishi Vidyapeeth, Rahuri

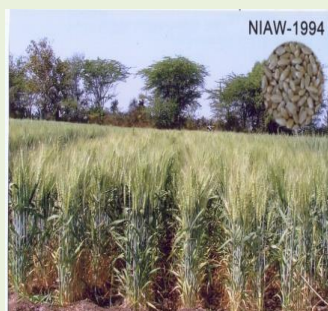
### Information about Crop wise Improved / Hybrid Varieties Developed by University

#### Netravati [NIAW-1415] [*Triticum aestivum*]



	<b>Release year</b>	2010
	<b>Name of Institute / University</b>	Agricultural Research Station, Niphad
	<b>Soil type</b>	Medium to heavy Soil
	<b>Climate</b>	Cool and dry
	<b>Sowing Time / Planting period</b>	Second Fortnight of October (Rainfed) First week of November (Restricted Irrigated)
	<b>Seed Rate (Per acre)</b>	30 kg/Acre (Rainfed), 40 kg/Acre (Restricted Irrigated)
	<b>Crop duration</b>	105 - 110 days (Rainfed), 110 - 115 days (Restricted Irrigated)
	<b>Productivity</b>	6-8 qt./ acre (Rainfed), 10-12 qt./ acre (Rest. Irrigated)
	<b>Characters / features</b>	<ol style="list-style-type: none"> <li>1) Recommended for rainfed and restricted irrigated conditions of Peninsular Zone</li> <li>2) Medium size grains</li> <li>3) Best for <i>chapati</i> making</li> <li>4) Tolerant to aphids</li> <li>5) Resistant to black and brown rust</li> <li>6) Protein content more than 12 %</li> <li>7) It has enriched with micronutrients like Iron (Fe) 48.4 ppm, Zinc (Zn) 33.4 ppm, Copper (Cu) 5.99 ppm, Manganese (Mn) 38.6 ppm</li> </ol>
	<b>Remark</b>	This variety gives better yield under favorable conditions.

#### Phule Samadhan [NIAW-1994] [*Triticum aestivum*]




	<b>Release year</b>	2014
	<b>Name of Institute / University</b>	Agricultural Research Station, Niphad
	<b>Soil type</b>	Medium to heavy Soil
	<b>Climate</b>	Cool and dry
	<b>Sowing Time / Planting period</b>	1 <sup>st</sup> fortnight of November (Timely) 1 <sup>st</sup> fortnight of December (Late)
	<b>Seed Rate (Per acre)</b>	40 kg/Acre (Timely sown), 50 kg/Acre (Late sown)
	<b>Crop duration</b>	115-120 days (Timely sown), 105-110 days (Late sown)
	<b>Productivity</b>	18-20 qt./ Acre (Timely sown), 16-18 qt./ Acre (Late sown)
	<b>Characters / features</b>	<ol style="list-style-type: none"> <li>1) Recommended for timely sown and late sown irrigated conditions of Maharashtra State.</li> <li>2) Bold size grains</li> <li>3) Best for <i>chapati</i> making</li> <li>4) Tolerant to aphids</li> <li>5) Highly Resistant to rust</li> <li>6) Protein content more than 12 %</li> </ol>
	<b>Remark</b>	Best high yielding variety widely accepted by farmers.




## Mahatma Phule Krishi Vidyapeeth, Rahuri

### Information about Crop wise Improved / Hybrid Varieties Developed by University

#### Phule Satwik (NIAW-3170)

	Release year	2020
	Name of Institute / University	Agricultural Research Station, Niphad
	Soil type	Medium to heavy Soil
	Climate	Cool and dry
	Sowing Time / Planting period	1 <sup>st</sup> fortnight of November
Seed Rate (Per acre)	40 kg/acre	
Crop duration	115-120 days	
Productivity	35-40 qt./ha. under restricted irrigated conditions	
Characters / features	Protein content 11-12 %, Softness of grain: 30-45 % (Very low), Bread quality score : 7.0 to 7.5, Gluten index: 80- 85 %, Chapati quality score: 7.0 to 7.5, Fe content: 30-40 ppm, Zn content: 30-35 ppm, resistant to rust	
Remark	Best for biscuit purpose, biscuit spread factor: > 10	

#### Phule Anupam (NIAW-3624)


	Release year	2021
	Name of Institute / University	Agricultural Research Station, Niphad
	Soil type	Medium to heavy Soil
	Climate	Cool and dry
	Sowing Time / Planting period	1 <sup>st</sup> fortnight of November
Seed Rate (Per acre)	40 kg/Acre	
Crop duration	105-110 days	
Productivity	30-35 qt./ ha. under one irrigation	
Characters / features	Protein content 11.4 %, attractive bold grains, resistant to rust, good for chapatti, resistant to water stress condition	
Remark	Recommended for cultivation in Maharashtra under timely sown restricted irrigation conditions	



## Mahatma Phule Krishi Vidyapeeth, Rahuri

### Information about Crop wise Improved / Hybrid Varieties Developed by University

#### Wheat- NIAW 4028

	<b>Release year</b>	2024
	<b>Name of Institute / University</b>	Agricultural Research Station, Niphad
	<b>Soil type</b>	Medium to heavy Soil
	<b>Climate</b>	Cool and dry
	<b>Sowing Time / Planting period</b>	1 <sup>st</sup> fortnight of November (Timely)
<b>Seed Rate</b>	40 kg/acre	
<b>Crop duration</b>	106 days	
<b>Productivity</b>	High yield - 33.43 q ha <sup>-1</sup> , potential yield- 46.8 q ha <sup>-1</sup>	
<b>Characters / features</b>	Resistance to brown rust and black rust, karnal bunt, powdery mildew, flag smut and blast disease, Resistance to shoot fly and wheat aphids, Grain Fe and Zn content 39.7 mg/kg and 37.0 mg/kg, respectively.	
<b>Remark</b>	Recommended for Peninsular Zone (Maharashtra, Karnataka, Andhrapradesh, Tamilnadu and K Kerala).	